



*Gulf Region*

---

# *Notice to Fish Harvesters*

---

## **NOTICE OF FISHERIES OPENING AND CLOSURES: FISHERIES DYNAMIC MANAGEMENT PROTOCOL**

**Moncton, NB – September 26, 2019**– Fisheries and Oceans Canada (DFO) – Gulf Region is providing a notice of the reopening of five grids that were previously closed and of new temporary fisheries closures of a fishing area due to the presence of North Atlantic Right Whales (NARW).

As per the Dynamic fisheries management protocol, the following grids will be opening on **September 26, 2019 at 5:00 p.m.** Atlantic Daylight Time (ADT):

- Portion grids: **GV33 GV34 GV35 GW33, GW34, GW35, GX33, GX34, GX35, GZ38, HB39 and HC39.**

As per the Dynamic fisheries management protocol, the following grids will be closed **September 29, 2019 at 5:00 p.m.** Atlantic Daylight Time (ADT):

- Full grids: **HE45, HE46, HF45, HF46;** and
- Portion of grids: **HG45, HG46 and HG47** from the 20 fathoms shallow water protocol line and deeper.

DFO is providing a **72 hours** advanced notice of a fishery closure. All non-tended gear must be removed from the closed area before the time of closure.

Please note that the following grids **remain closed** until further notice:

- Full grids: **HE47, HE48, HE49, HF47, HF48, HF49, GV38, GV39, GV40, GV41, GV42, GW38, GW39, GW40, GW41, GW42, GX38, GX39, GX40, GX41, GX42, GY38, GY39, GY40, GY41, GY42, GZ39, GZ40, HA39, HA40, HA41, HB40, HB41, HC40, HC41;** and
- Portions of grids: **HD47, HD48, HD49 and GU35.**

The closures are in effect for the following fisheries where the fishing seasons are currently opened: snow crab, toad crab, rock crab, lobster, whelk, Greenland halibut (fixed gear) and winter flounder (fixed gear). Closures will also be in effect for Atlantic halibut (fixed gear), mackerel (gillnet) and herring (gillnet) when gear is left unattended.

.../2

DFO asks licence holders to be vigilant during fishing activities concerning the presence of North Atlantic Right Whales. Furthermore, please be reminded that it is the responsibility of the licence holder to take into account the marine safety notices issued, amongst others, by Environment and Climate Change Canada and Transport Canada, as well as the standards and best practices in marine safety, and to take all measures to ensure safe fishing operations.

The coordinates representing the contour of the **closed static area** are listed below:

| Points    | Position       |                |
|-----------|----------------|----------------|
|           | North Latitude | West Longitude |
| <b>1</b>  | 48° 20' 0" N   | 63° 50' 0" W   |
| <b>2</b>  | 47° 40' 0" N   | 63° 50' 0" W   |
| <b>3</b>  | 47° 40' 0" N   | 64° 00' 0" W   |
| <b>4</b>  | 47° 30' 0" N   | 64° 00' 0" W   |
| <b>5</b>  | 47° 30' 0" N   | 64° 20' 0" W   |
| <b>6</b>  | 47° 50' 0" N   | 64° 20' 0" W   |
| <b>7</b>  | 48° 00' 0" N   | 64° 10' 0" W   |
| <b>8</b>  | 48° 10' 0" N   | 64° 10' 0" W   |
| <b>9</b>  | 48° 10' 0" N   | 64° 00' 0" W   |
| <b>10</b> | 48° 20' 0" N   | 64° 00' 0" W   |
| <b>11</b> | 48° 20' 0" N   | 63° 50' 0" W   |

Area enclosed by rhumb lines (similar to straight lines plotted on a nautical chart) joining the points listed above in the order they are listed. Point references are based on the geodesic system North American Datum 1983 (NAD83). Positions are expressed in degrees, minutes and seconds.

The coordinates representing the contour of the **Fisheries dynamic management protocol** (the large area east of Gaspé Peninsula and New Brunswick) are listed below:

| Points    | Positions      |                |
|-----------|----------------|----------------|
|           | North Latitude | West Longitude |
| <b>1</b>  | 48° 30' 0.0" N | 63° 0' 0.0" W  |
| <b>2</b>  | 47° 50' 0.0" N | 63° 0' 0.0" W  |
| <b>3</b>  | 47° 50' 0.0" N | 63° 20' 0.0" W |
| <b>4</b>  | 47° 40' 0.0" N | 63° 20' 0.0" W |
| <b>5</b>  | 47° 40' 0.0" N | 63° 10' 0.0" W |
| <b>6</b>  | 47° 10' 0.0" N | 63° 10' 0.0" W |
| <b>7</b>  | 47° 10' 0.0" N | 63° 30' 0.0" W |
| <b>8</b>  | 47° 30' 0.0" N | 63° 30' 0.0" W |
| <b>9</b>  | 47° 30' 0.0" N | 63° 40' 0.0" W |
| <b>10</b> | 47° 50' 0.0" N | 63° 40' 0.0" W |
| <b>11</b> | 47° 50' 0.0" N | 63° 50' 0.0" W |
| <b>12</b> | 48° 30' 0.0" N | 63° 50' 0.0" W |
| <b>13</b> | 48° 30' 0.0" N | 63° 0' 0.0" W  |

The coordinates representing the contour of the **Fisheries dynamic management protocol** (*the two small areas closed in GU35 from the 20 fathoms shallow water protocol line to deeper waters*) are listed below:

| Points   | Position       |                |
|----------|----------------|----------------|
|          | North Latitude | West Longitude |
| <b>1</b> | 48° 40' 0.0" N | 64° 10' 0.0" W |
| <b>2</b> | 48° 39' 0.0" N | 64° 10' 0.0" W |
| <b>3</b> | 48° 40' 0.0" N | 64° 11' 0.0" W |
| <b>4</b> | 48° 40' 0.0" N | 64° 10' 0.0" W |

| Points   | Position        |                |
|----------|-----------------|----------------|
|          | North Latitude  | West Longitude |
| <b>1</b> | 48° 36' 20.0" N | 64° 10' 0.0" W |
| <b>2</b> | 48° 31' 42.9" N | 64° 10' 0.0" W |
| <b>3</b> | 48° 33' 0.0" N  | 64° 13' 0.0" W |
| <b>4</b> | 48° 34' 0.0" N  | 64° 13' 0.0" W |
| <b>5</b> | 48° 36' 0.0" N  | 64° 12' 0.0" W |
| <b>6</b> | 48° 36' 20.0" N | 64° 10' 0.0" W |

Area enclosed by rhumb lines (similar to straight lines plotted on a nautical chart) joining the points listed above in the order they are listed. Point references are based on the geodesic system North American Datum 1983 (NAD83). Positions are expressed in degrees, minutes and seconds.

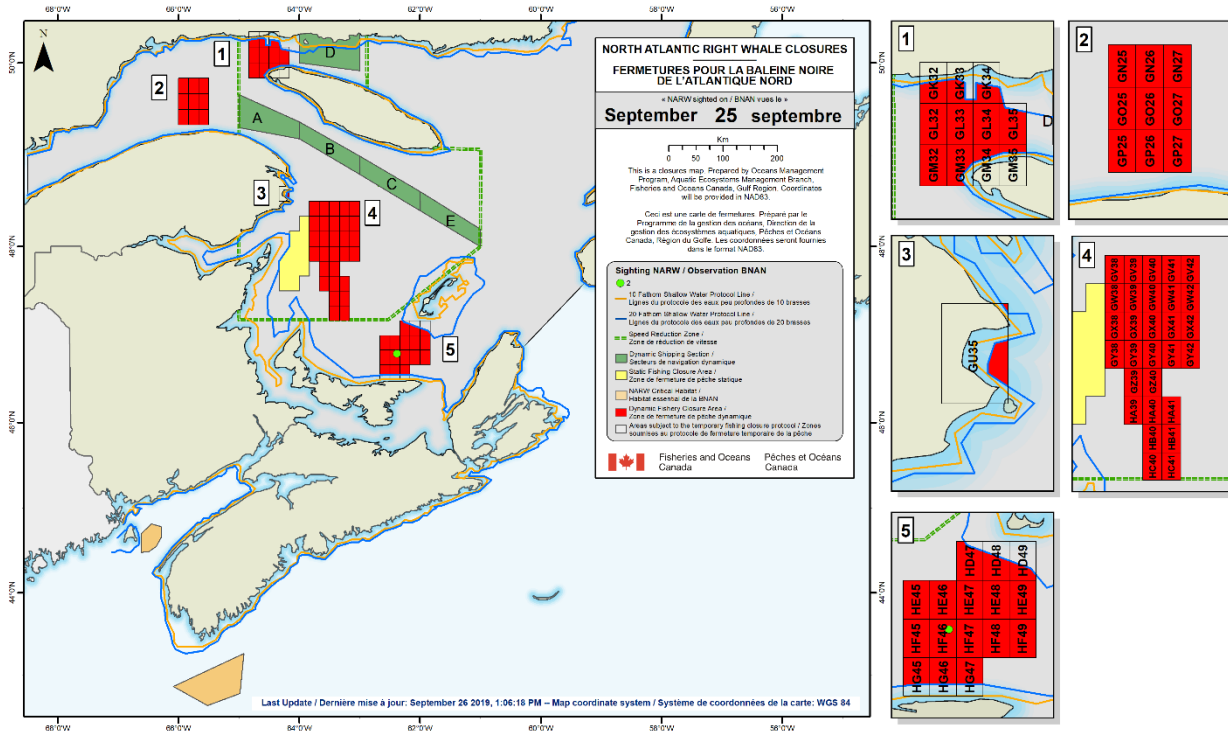
The coordinates representing the contour of the **Fisheries dynamic management protocol** (*the large area between the Magdalen islands and Prince Edward Island from the 20 fathoms shallow water protocol line to deeper waters*) are listed below:

| Points    | Position        |                |
|-----------|-----------------|----------------|
|           | North Latitude  | West Longitude |
| <b>1</b>  | 46° 33' 0.0" N  | 62° 34' 0.0" W |
| <b>2</b>  | 46° 32' 37.5" N | 62° 40' 0.0" W |
| <b>3</b>  | 47° 0' 0.0" N   | 62° 40' 0.0" W |
| <b>4</b>  | 47° 0' 0.0" N   | 62° 20' 0.0" W |
| <b>5</b>  | 47° 10' 0.0" N  | 62° 20' 0.0" W |
| <b>6</b>  | 47° 10' 0.0" N  | 62° 17' 0.0" W |
| <b>7</b>  | 47° 9' 0.0" N   | 62° 16' 0.0" W |
| <b>8</b>  | 47° 3' 0.0" N   | 61° 52' 0.0" W |
| <b>9</b>  | 47° 1' 20.0" N  | 61° 50' 0.0" W |
| <b>10</b> | 46° 40' 0.0" N  | 61° 50' 0.0" W |
| <b>11</b> | 46° 40' 0.0" N  | 62° 10' 0.0" W |
| <b>12</b> | 46° 33' 0.0" N  | 62° 10' 0.0" W |
| <b>13</b> | 46° 33' 0.0" N  | 62° 34' 0.0" W |

Area enclosed by the coastlines and rhumb lines (similar to straight lines plotted on a nautical chart) joining the points listed above in the order they are listed. Point references are based on the geodesic system North American Datum 1983 (NAD83). Positions are expressed in degrees, minutes and seconds.

.../4

Map identifying the grid closures in the Southern Gulf of St. Lawrence due to the presence of NARW.



**FOR MORE INFORMATION:**

Regular updates and maps indicating sightings will be posted at the following address: <http://dfo-mpo.gc.ca/species-especes/mammals-mammiferes/narightwhale-baleinenoirean/alerte-alerte/index-eng.html>